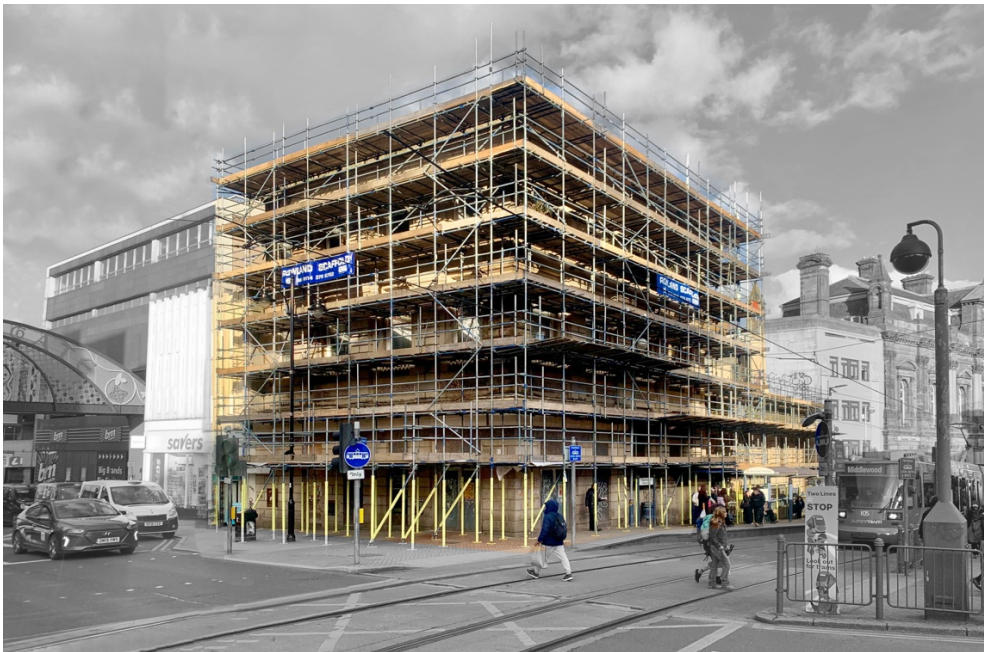


S1 ARTSPACE

Press Release

28th February 2025

S1 Artspace Commences Initial Works on Grade II Heritage Premises with Pinnacle Conservation



S1 Artspace's new premises, the former Yorkshire Bank Chambers on the junction of Haymarket and Commercial Street, Sheffield

Yorkshire-based heritage specialists Pinnacle Conservation have commenced initial repair works on S1 Artspace's new Grade II listed premises on Haymarket in Sheffield city centre. This important first step will ensure the building remains watertight and structurally sound while detailed designs for its full restoration are developed.

Following a competitive tender process in November 2024, Pinnacle Conservation was appointed to undertake these essential works, which is being project managed by Sheffield-based quantity surveying firm Rider Levett Bucknall. The works focus on addressing water ingress, making the building safe, and removing redundant 1960s additions, including false ceilings and partitions. It also includes the removal of asbestos, ensuring the site is ready for its next stage of redevelopment.

Commenting on the project, Andy Hare, Construction Manager at Pinnacle Conservation, said: "Preserving our built heritage is incredibly important, and we have been fortunate to work on some of Yorkshire's most significant historic buildings, including York Theatre Royal, Wentworth Woodhouse, and Castle Howard. We are delighted to be working on the restoration of the former Yorkshire Bank on Haymarket and contributing to the wider regeneration of the Castlegate area."

Louise Hutchinson, Strategic Director for the project, added: "Over recent years, the building has suffered from deterioration due to prolonged water ingress. As a Grade II listed heritage site in

Sheffield city centre, we felt it was essential to undertake immediate repairs to prevent further damage while we continue to develop the design and secure funding for its full restoration.”

Works commenced in February 2025 and are expected to be complete by late spring. Once these initial repairs are undertaken, S1 Artspace will open part of the ground floor to the public, inviting visitors to view and provide feedback on the project’s initial designs as part of a wider public consultation process.

Cllr Ben Miskell, Chair of the Transport, Regeneration and Climate Policy Committee at Sheffield City Council, commented: "We're really excited about the improvements in Castlegate as part of our wider transformation of the city centre. With Harmony Works securing £8.2 million from The Heritage Lottery Fund and Arts Council England to transform Canada House, alongside the significant progress at the Castle site - the birthplace of our city. The initial works starting at the former Yorkshire Bank mark another exciting step in regenerating Castlegate and expanding Sheffield’s cultural and heritage offer."

S1 Artspace’s new home will play a key role in the broader cultural regeneration of Castlegate, complementing nearby cultural and heritage projects. Further details on the next stages of the project and public consultation events will be shared in the coming months.

The Project is supported by the following funders:



Funded by
UK Government



ADDITIONAL PROJECT IMAGES



*Left to right: **Arron Rose**, Site Manager, **Andy Hare**, Construction Manager, and **Amy Stamford**, Commercial Manager from Pinnacle Conservation and **Rebecca Sleight**, Senior Building Surveyor from Rider Levett Bucknall*



View of work commencing on site overlooking Fitzalan Square.



*Left to right: **Arron Rose**, Site Manager, **Andy Hare**, Construction Manager, and **Amy Stamford**, Commercial Manager from Pinnacle Conservation and **Rebecca Sleight**, Senior Building Surveyor from Rider Levett Bucknall*

HISTORY



1871 – 1910	General Post Office (Haymarket)
1911 – 1967	Sheffield Stock Exchange
1968 – 2014	Yorkshire Bank Chambers
2015 – 2024	Vacant
2024 – today	S1 Artspace

1873: The building was originally built in 1871 to serve as Sheffield's General Post Office (Haymarket)



1912: Following the completion of a larger Head Post Office on Fitzalan Square to meet growing demand the building became the Sheffield Stock Exchange, which it remained for the next 56 years.



1968: In the late 1960's the building was repurposed as a branch of the Yorkshire Bank until its closure in 2014. The building has been vacant since this time.

SURROUNDING SITES & DEVELOPMENTS

